



Industrial Microscopes

**ECLIPSE**

**LV150**

**LV150A**

**LV100D**

**CFI60**

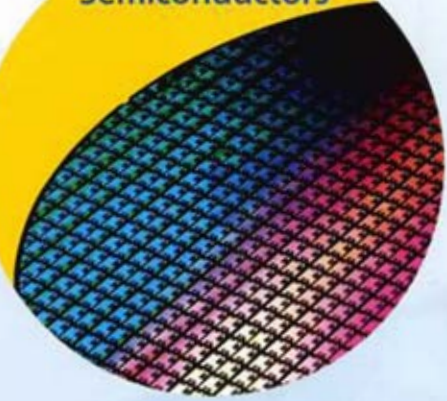
## MEMS



- Printer heads
- Micro sensors
- Optical switches
- GMR heads for HDD

## Versatility

## Semiconductors



- Bare wafers
- Lithography process
- Probe, test processes
- Post-dicing

## Casts and Parts



- OA equipment parts
- Cell phones, PDAs, DSC, PC parts
- Automobiles, aeronautics

## PCB



- Medium/small PCB
- FPC
- Interposer substrates

## Optical Performance

## Precision Molds



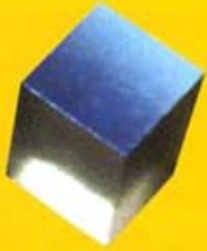
- Precision molds



**LV150**

**A versatile microscope**

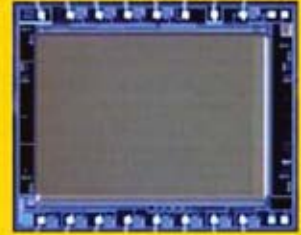
## Materials



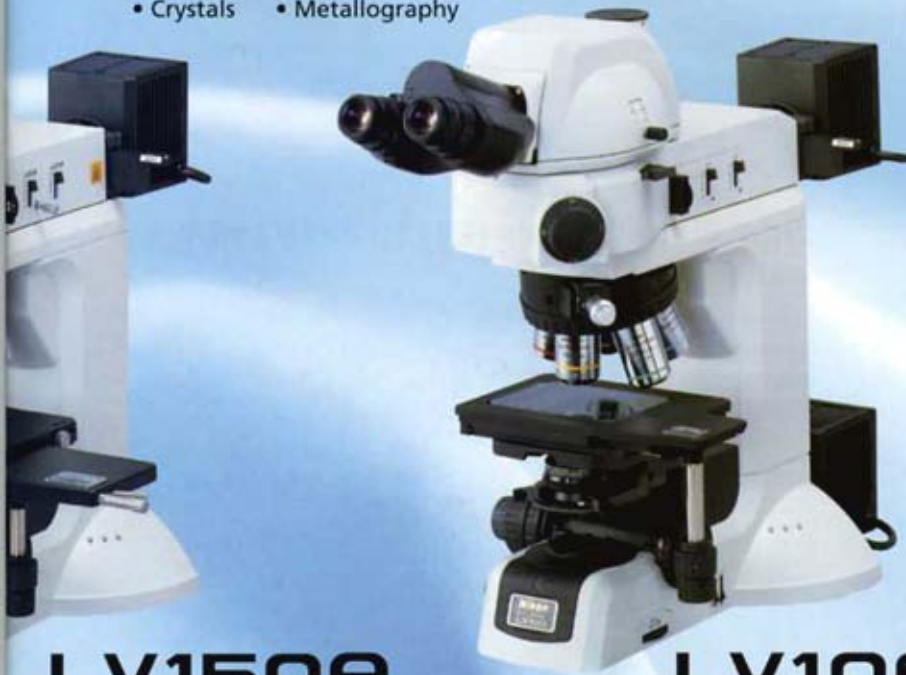
- Macromolecules, monomeric materials
  - Organic/inorganic materials
    - Polymers • Thin film
    - Magnetic materials
  - Crystals • Metallography

## Extend Your Vision

## IC Packages



- LF/TAB • WL-CSP
- QFP • SIP
- BGA, CSP, FC



## Versatility

## Extend Your Vision

## Optical Performance

## Improved Performance

# LV150A

# LV100D

## system with a modular design

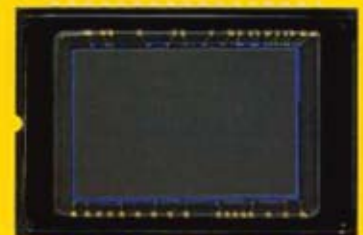
## FPD



- LCD, color filters
- Polarizing filters
- Organic EL

## Improved Performance

## Display Devices



- CCD • CMOS
- LCOS • DMD

## Versatility

The modular design of the Eclipse LV series allows an unprecedented level of versatility. The Eclipse LV series offers flexibility that enables it to cover a wide variety of products and applications, extending from development and quality control to inspection in the manufacturing process. Users will recognize the superb performance of the Eclipse LV series when inspecting semiconductors, FPD, packages, electronics substrates, materials (material science), medical devices, cast/metallic/ceramic parts, precision molds, MEMS, telecommunications devices, and a wide variety of other samples.

### Modular Design



LV150 standard combination

### Accepts Thicker Samples

The maximum sample height can be increased to 82mm from 47mm by inserting the LV-CR Column Riser 35 between the main body and arm of the microscope. This feature is useful for viewing the surfaces of precision molds, optical materials and other thick samples.



Without column riser

With column riser

### Non-Nikon Stages (LV150 or LV150A only)

Use of non-Nikon stages, such as the Suruga Seiki B23-60CR, in combination with the LV-SUB Substage 2 allows the microscope to handle thicker samples of up to 116.5 mm, thereby enabling the observation of fiber ends and other tools.



Combination of LV-150 with LV-SUB Substage 2 and Suruga Seiki B23-60CR stage

# Versatility

## Extensive Range of Industrial Stages and Accessories

Users can select suitable models based on sample and stage stroke. All stages are highly durable with their triple-plate design.

### Compact Industrial Stage: LV-S32 3x2 Stage

The newly designed LV-S32 3x2 is a compact stage for industrial microscopes. Its triple-plate design ensures durability, stability and ease of use, even when heavy samples such as metallic materials are observed. The standard glass plate makes this stage suitable for episcopic and diascope illumination.



LV-S32 3x2 Stage  
Stroke: 75 x 50 mm



LV-S64 6x4 Stage  
Stroke: 150 x 100 mm



LV-S6 6x6 Stage  
Stroke: 150 x 150 mm



LV-SUB Stage  
(exclusive for LV150/LV150A)



LV-SUB Substage 2  
(exclusive for LV150/LV150A)



L-S6WH Wafer Holder  
(for LV-S6 6x6 Stage)



L-S6PL ESD Plate  
(for LV-S6 6x6 Stage)



LV-S32PL ESD Plate  
(for LV-S32 3x2 Stage)

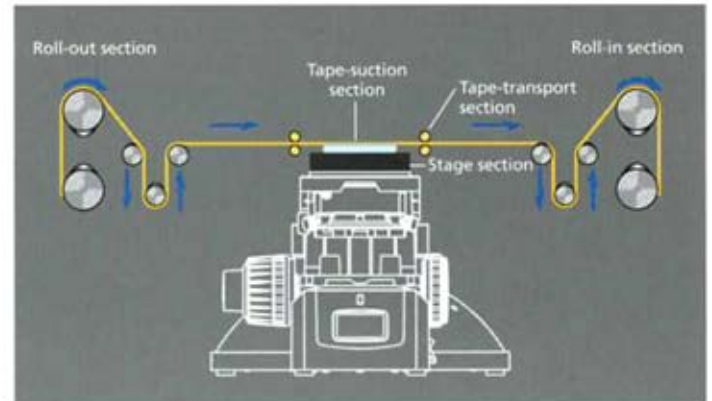


LV-S32SGH Slideglass Holder  
(for LV-S32 3x2 Stage)

Appropriate holder and substage are selected based on sample and stage combination.

## Dia Base Unit for Diascopic Illumination

In the Eclipse LV series, the LV-DIA Dia Base is available for diascope illumination OEM use. Users can now take full advantage of the modular design. A UN2 transformer is used for the power supply.



An example of LV-DIA Dia Base used in a tape sample inspection system



LV-DIA Dia Base

## Extend Your Vision

A wide variety of observation methods are available with the Eclipse LV series. Observation with first-order red compensator, UV polarizing, and epi-fluorescence observation with UV excitation, in addition to brightfield, darkfield, DIC, simple polarizing, epi-fluorescence (excitation using visible light) and double-beam interferometry are all possible. A new high-intensity, low power-consumption 12V-50W halogen light source has been developed.

### Universal Epi-Illuminator: LV-UEPI

The LV-UEPI universal epi-illuminator enables brightfield, darkfield, simple polarizing and DIC observations. Field and aperture diaphragms are automatically opened when the observation is switched from brightfield to darkfield, and return to their original position when switched back to brightfield.



- Brightfield
- Darkfield
- Simple polarizing
- DIC

### High-Intensity 12V-50W Halogen Light Source:

#### LV-LH50PC Precentered Lamphouse

Although the LV-LH50PC Precentered Lamphouse is 12V-50W, the brightness is equivalent to or higher than that of 12V-100W. The low power-consumption halogen light source contributes to the compact design of the microscope while also being friendly to the environment. Defocus induced by heat from the illuminator is substantially reduced.

### Universal Epi-Illuminator 2: LV-UEPI2

The LV-UEPI2 universal episcopic illuminator is equipped with advanced optics suitable for a wide variety of observation methods—brightfield, darkfield, DIC and epi-fluorescence. It allows the operator to concentrate on the observation by automatically maintaining optimal illumination conditions for the aperture diaphragm, shutter, filters, including diffuser and ND filter.



- Brightfield
- Darkfield
- Simple polarizing
- Observation with first-order red compensator
- DIC
- Epi-fluorescence (UV excitation possible)
- UV polarizing epi-fluorescence

### Optimal Illumination Function

	Field diaphragm	Aperture diaphragm	Shutter	UV-cut filter
BF	Any diameter	Any diameter	Open	Insert
DF	Open	Open	Open	Insert
FL1	Any diameter	Any diameter	Open	—
FL2	Any diameter	Any diameter	Open	—

# Optical Performance

## Improved Transmission Rate for UV Wavelength

### CFI LU Plan Fluor series

The transmission rate in the UV wavelength range has been improved for the new CFI LU Plan Fluor series. These objective lenses are suitable for various research, analysis and examination needs, while maintaining Nikon's commitment to high NA and long working distance. Only one kind of objective lens is needed for brightfield, darkfield, simple polarizing, observation with first-order red compensator, DIC and UV epifluorescence observations. These objective lenses, which offer high resolution and easy-to-use performance, can be combined not only with microscopes but also with other equipment for even greater versatility.



CFI60 LU Plan Fluor EPI series



CFI60 LU Plan Fluor BD series

## Objective Lenses with Correction Ring

### CFI L Plan EPI CR series

The CFI60 series now includes the CFI L Plan EPI CR series to cope with the thinner coverglass used in liquid crystal displays, and highly integrated, and dense devices. Coverglass correction can be continuously made from 0 mm up to 1.2 mm (0-0.7 mm and 0.6-1.3 mm for 100x) with the correction ring. The 100x objective lens offers 0.85 high NA, while enabling high-contrast imaging of cells and patterns without being affected by the coverglass.



CFI60 L Plan EPI CR series of objective lenses with correction ring

## Environment Friendly

The eco glass used in the CFI LU Plan Fluor and L Plan EPI CR series does not contain harmful substances such as lead and arsenic.



Without correction (50x)



With correction at 0.7 mm (50x)

## CFI60 Series Objectives

Model	Magnification	NA	Working Distance (mm)
CFI L Plan EPI	2.5X	0.075	8.8
CFI LU Plan Fluor EPI	5X	0.15	23.5
<b>New</b>	10X	0.30	17.5
	20X	0.45	4.5
	50X	0.80	1.0
	100X	0.90	1.0
CFI LU Plan EPI ELWD	20X	0.40	13.0
	50X	0.55	10.1
	100X	0.80	3.5
CFI L Plan EPI SLWD	20X	0.35	24.0
	50X	0.45	17.0
	100X	0.70	6.5
CFI LU Plan Apo EPI	100X	0.95	0.4
	150X	0.95	0.3
CFI L Plan Apo EPI WI	150X	1.25	0.25

Model	Magnification	NA	Working Distance (mm)
CFI LU Plan Fluor BD	5X	0.15	18.0
<b>New</b>	10X	0.30	15.0
	20X	0.45	4.5
	50X	0.80	1.0
	100X	0.90	1.0
CFI LU Plan BD ELWD	20X	0.40	13.0
	50X	0.55	9.8
	100X	0.80	3.5
CFI LU Plan Apo BD	100X	0.90	0.51
	150X	0.90	0.4

Model	Magnification	NA (mm)	Working Distance (mm)	Glass Thickness Correction Range
CFI L Plan EPI CR <b>New</b>	20x	0.45	10.9-10.0	0-1.2mm
CFI L Plan EPI CR <b>New</b>	50x	0.7	3.9-3.0	0-1.2mm
CFI L Plan EPI CRA <b>New</b>	100x	0.85	1.2-0.85	0-0.7mm
CFI L Plan EPI CRB <b>New</b>	100x	0.85	1.3-0.95	0.6-1.3mm

## Improved Performance

Overall performance has been improved with better durability and rigidity.

### Tilting Trinocular Eyepiece Tube



#### LV-TT2 Tilting Trinocular Eyepiece Tube

The newly developed LV-TT2 tilting trinocular eyepiece tube (erect image) offers comfort to all users, regardless of their stature or viewing positions. The optical path changeover of 100:0/20:80 allows simultaneous use of monitor.

\*C-mount adapter 0.55x can be directly mounted to LV-TT2 and LV-TI3 for the DS-2M series.

### Thorough ESD Protection



All parts of the microscope that might be touched, including the body, tube and stage, have been insulated. This improves anti-contamination and prevents samples from being harmed by electrostatic, thereby improving yields.

Electrostatic decay time: 1000-10V, within 0.2 sec.

### Highly Durable Motorized Nosepiece



#### LV-NU5A Nosepiece

The LV-NU5A motorized universal quintuple nosepiece durability has been dramatically improved compared to its predecessor and can be used with the LV150A. In combination with the LV-NCNT motorized nosepiece controller, it can also be used in other devices.

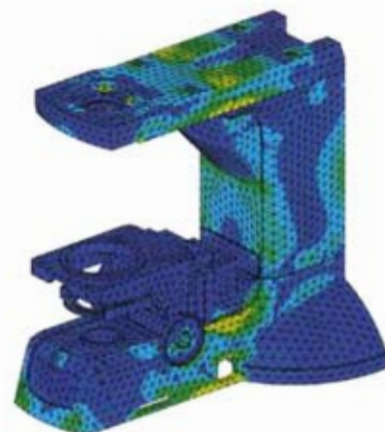
#### Manual Nosepiece

A variety of manual control nosepieces are available to suit all needs.



### Highly Rigid, Vibration-Free Body

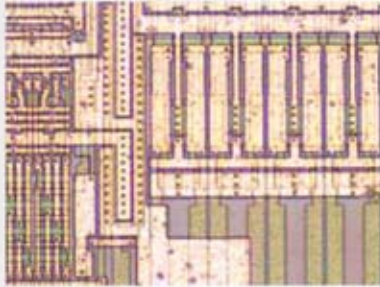
The use of structural analysis during the design process has improved rigidity and anti-vibration parameters to yield clear images even at high magnification.





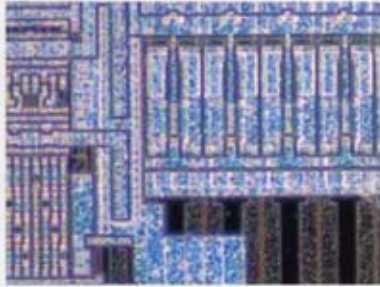
# Observation Methods

## Brightfield



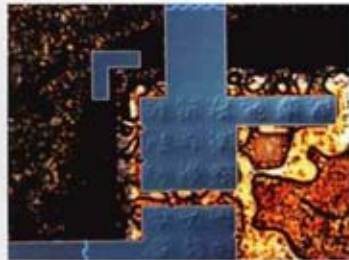
The antflare design applied to the objective lenses and light source ensures bright, and high-contrast images.

## Darkfield

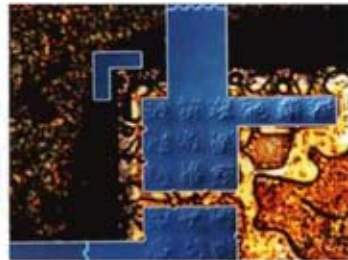


Nikon's unique "Fly-eye Lens" used in the darkfield illuminator yields a threefold increase in brightness over previous models. This allows high-sensitivity detection of defects and height gaps in samples.

## Nomarski DIC



L-DIC DIC Prism (standard)



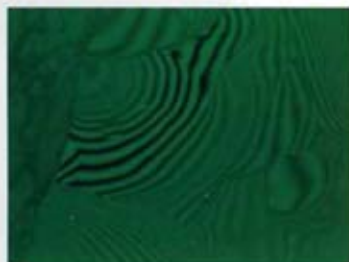
L-DIHC DIC Prism (high contrast)



YM-PO Polarizer L-AN Analyzer L-DIC DIC Prism L-DIHC High-contrast DIC Prism

Standard or high contrast DIC sliders can be selected to suit the sample. This method is useful for the surface observations of various devices and precision molds.

## Double-Beam Interferometry Equipment (measures nano scale height gaps)

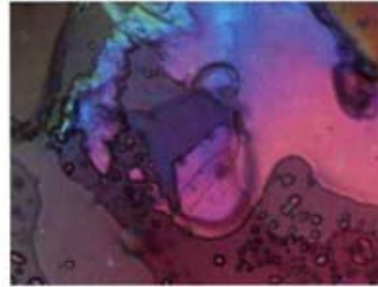


Michelson (TI) and Mirau (DI) types of episcopic double-beam interferometry can be carried out. A filar micrometer eyepiece can be used to examine or measure samples while avoiding direct contact.



Episcopic double-beam Interferometry Equipment TI/DI

## Simple Polarizing



In addition to simple polarizing, a lambda plate can be inserted into the optical path to achieve first-order red compensator observation. This is useful for liquid crystal inspections (when used in combination with the LV-UEPI 2).

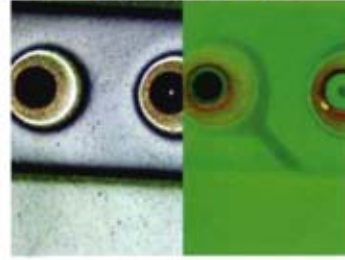


YM-PO Polarizer L-AN Analyzer



LV-PO Polarizer LV-FLAN FL Analyzer LV-AP λ Plate

## Epi-Fluorescence



Brightfield Epi-fluorescence B-2A

UV, V, BV, B or G excitation fluorescence filter blocks can be selected. This method is perfect for the observation of OLED, ion migration and other substrate uses.

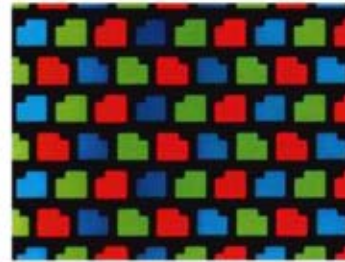


Fluorescence filter blocks



LV-UVPO Polarizer LV-FLAN FL Analyzer

## Diascopic Illumination



Diascopic illumination is used to observe optical parts, FPD and other samples that transmit light.



Condenser

# LV150/LV150A

(Episcopic Illumination Type)

## LV-T13 Trinocular Tube

A trinocular tube with an optical path changeover of 100:0/0:100.

## LV-LH50PC Precentered Lamphouse

A low power-consumption 12V-50W halogen light source equivalent to or higher than the 12V-100W type.

## CFI-Series Eyepiece

## LV-UEPI

An illuminator that can be used for brightfield, darkfield, simple polarizing and DIC observations.

## LV-NU5A Nosepiece

A universal motorized nosepiece that is 10 times more durable than its predecessors.

## LV-S6 6x6 Stage

An episcopic illumination stage capable of inspecting 150mm wafers. (With 6" wafer holder)

## LV150/LV150A

The LV150 and LV150A microscopes are used for episcopic illumination.

## CFI LU Plan Fluor Series

These objective lenses feature high NA, long working distances and improved transmission rate in the UV range.

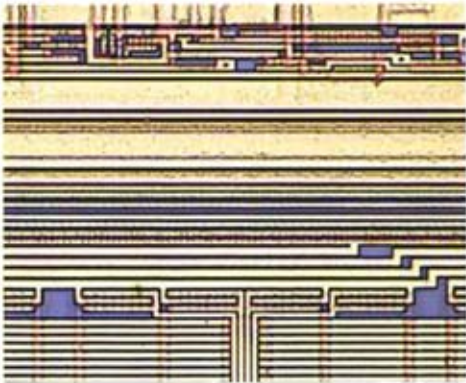
## LV150A controls

Motorized nosepiece controls



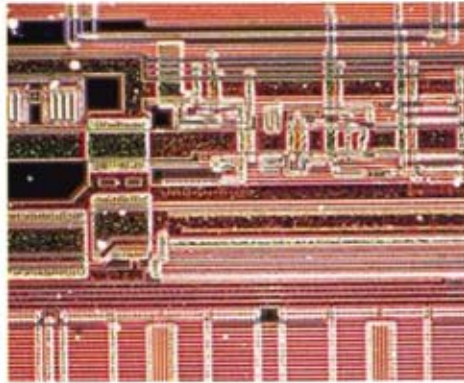
# Applications

### Semiconductor (wafers)



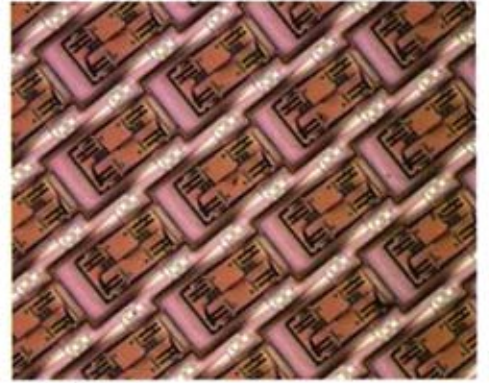
Brightfield

### Semiconductor (wafers)



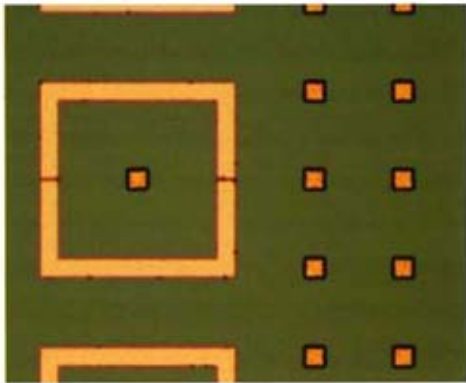
Darkfield

### MEMS (optical switch)



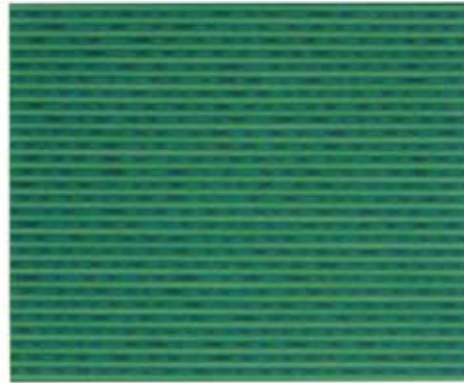
Brightfield

### Micro Bump



Brightfield

### Compact Disc (CD)



Simple polarizing

### Image Sensors (CCD)



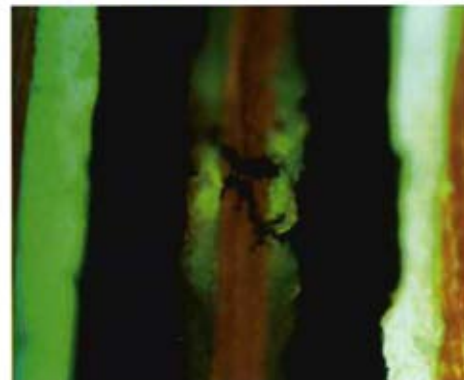
Brightfield

### PCB (ion migration)



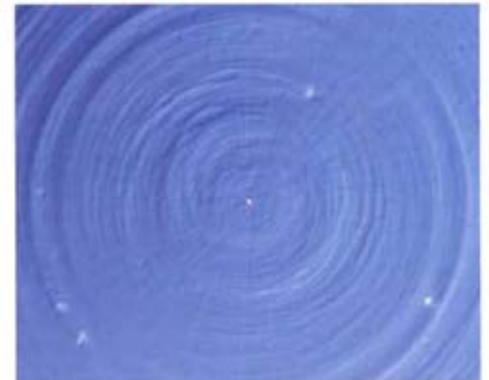
Brightfield

### PCB (ion migration)



Epi-fluorescence

### Precision Mold



DIC

# LV100D

(Episcopic/Diascopic Illumination Type)

## LV-TT2 Tilting Trinocular Tube

The LV-TT2 is a tilting trinocular tube that has an optical path changeover of 100:0/20:80.

## LV-LH50PC 12V-50W Lamphouse

A low power-consumption 12V-50W halogen light source equivalent to or higher than the 12V-100W type.

## CFI-Series Eyepiece

## LV-UEPI2

The LV-UEPI2 illuminator enables brightfield, darkfield, DIC, simple polarizing, and UV excitation epi-fluorescence observations.

## Nosepiece

Selectable from C-N6 (brightfield), L-NBD5 (bright/darkfield) and L-NU5 (universal) nosepieces.

## LV-S32 3x2 Stage

This small, industrial-use stage has a triple-plate design and can be used for episcopic and diascopic illumination.

## LV100D

The LV100D microscope is capable of episcopic and diascopic illumination.

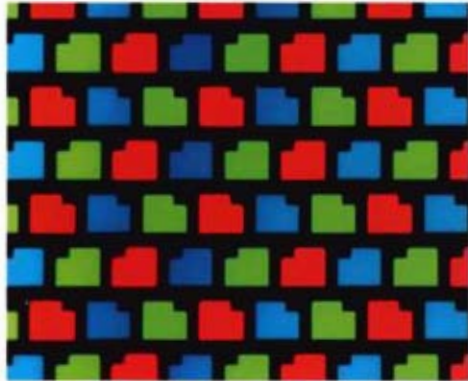
## CFI LU Plan Fluor Series

These objective lenses feature high NA, long working distances and improved transmission rate in the UV range.



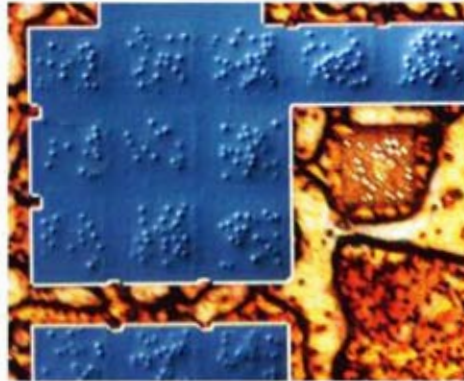
# Applications

LCD (color filter)



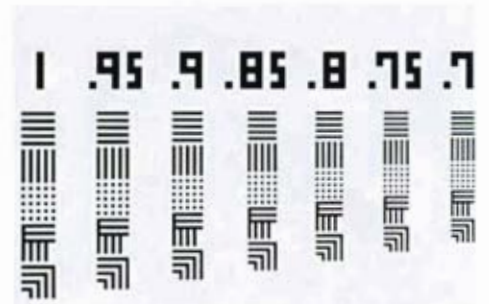
Diascopic brightfield

LCD (conductive particle)



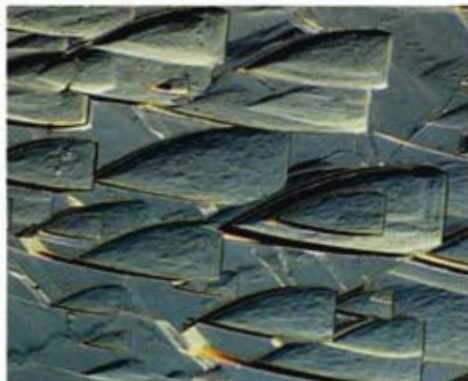
DIC

Test Reticle



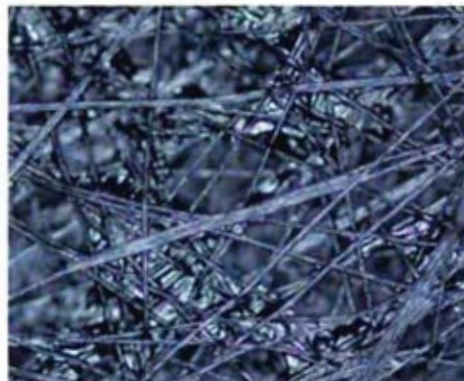
Diascopic brightfield

Spodumene



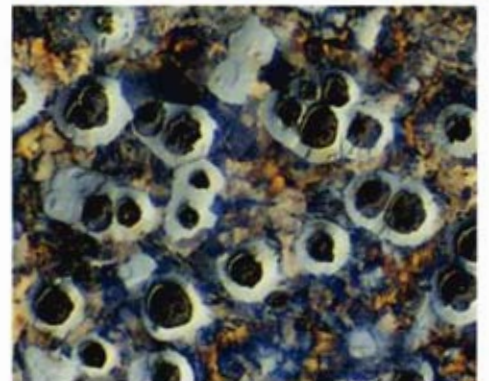
DIC

Carbon Paper



Brightfield

Nodular Graphite Cast Iron



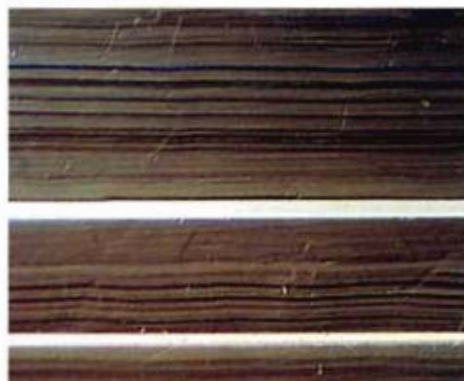
DIC

Tourmaline



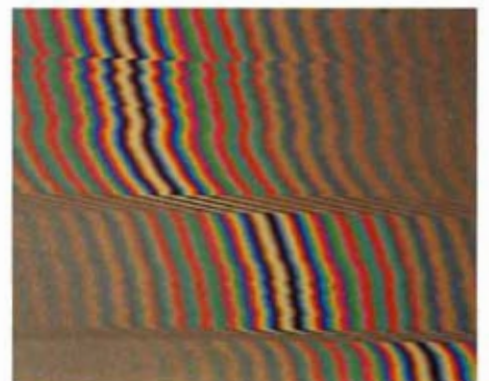
Brightfield

Tourmaline



DIC

Tourmaline



Double-beam interferometry

## Eyepiece Tubes



LV-T13 Trinocular Eyepiece Tube



LV-TT2 Tilting Trinocular Eyepiece Tube

## Eyepieces

Model	F.O.V.	Remarks
CFI 10x	22	
CFI 10xM	22	Photomask included
CFI 10xCM: for C-TE binocular ergo tube	22	Crosshairs and micrometer included
CFI 12.5x	16	
CFI 15x	14.5	
CFI UW 10x	25	
CFI UW 10xM	25	Photomask included
Micrometer eyepiece 10xN	20	Stroke 10 mm Main scale: 0.1 mm/increments Sub scale: 0.01 mm/increments

## Nosepieces



C-N6 Nosepiece (Brightfield)



L-NBD5 Nosepiece (Bright/darkfield)



L-NU5 Nosepiece (Universal)



LV-NU5A Motorized Nosepiece (Universal)

## Objective Lenses



CFI LU PLAN FLUOR EPI series



CFI L PLAN EPI CR series



CFI LU PLAN FLUOR BD series

## Objective Adapters



LU Objective Adapter M32-25



C-OA 15mm Adapter

## Diascopic Illumination Condensers



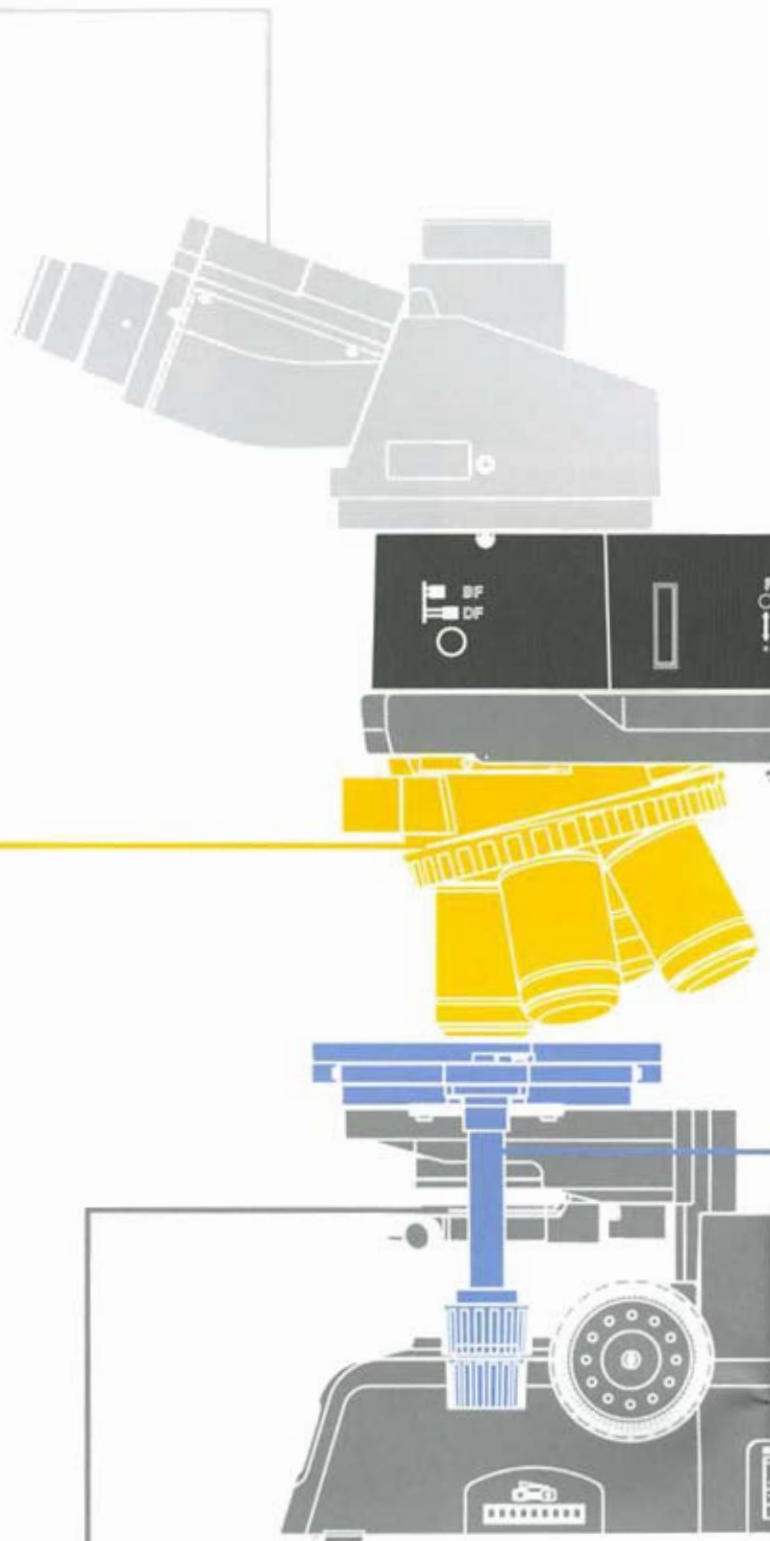
LWD Achromat

Slide Achromat 2-100x

C-C Abbe

C-C Achro

Darkfield (Dry)



AC

## Illuminators



LV-UEPI



LV-UEPI2

## Double Port



Y-IDP Double Port  
(Ratio 100:0/55:45)  
Y-IDP Double Port 0/100  
(Ratio 100:0/0:100)

## Polarizing/DIC accessories

### Simple Polarizing



YM-PO Polarizer L-AN Analyzer

### UV Polarizing with Epi-Fluorescence



LV-UV PO UV Polarizer

### Observation with First-Order Red Compensator



LV-PO Polarizer LV-FLAN FL Analyzer LV-λP λ Plate

### DIC



YM-PO Polarizer L-AN Analyzer L2-DIC DIC Prism L-DIHC DIC Prism HC

## Substages (LV150/LV150A)



LV-SUB Stage



LV-SUB Stage 2

## Stages



LV-S6 6x6 Stage



LV-S64 6x4 Stage



LV-S32 3x2 Stage

## Holders

### For LV-S6 6x6 Stage



L-S6WH Wafer Holder



L-S6PL ESD Plate

### For LV-S32 3x2 Stage



LV-S32PL ESD Plate



LV-S32SGH Slideglass Holder

## Micrometers

### Objective Micrometer



### Eye-piece Micrometer



### Grid Micrometer



# ACCESSORIES

## Digital Sight

The Digital Sight series is a powerful imaging system for monitoring/capturing images taken under brightfield, darkfield, DIC, epi-fluorescence, and other observation methods.

### Standalone Type

This type comes with an LCD monitor, making it convenient for on-screen monitoring without PC and in applications that require long/multiple exposures.



### Real-time imaging Camera—DS-2Mv-LI

- Live image display at 30fps max.
- Image size: 1600 x 1200 pixels
- 6.3" TFT monitor
- Analog RGB output
- CompactFlash card slot
- USB mass-storage-class compatible
- Direct print function (Pict bridge compatible) optional<sup>\*1</sup>
- Ethernet (100BASE/TX) port<sup>\*2</sup>



\*1: A CP900DC dedicated printer and C-mount adapter are necessary. Provided with real 10 mode (10X printing).

\*2: FTP Client/Server, HTTP Server Telnet Server functions provided.

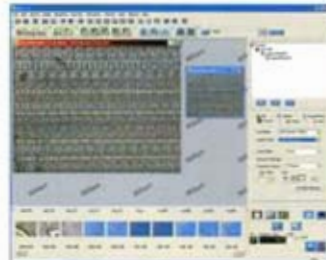
### PC-Connection Type

This type requires connection to PC and allows observation on a PC monitor, image capture, measurement and analysis when the special application software ACT-2U is used.



### Real-time imaging Camera—DS-2Mv-UI

- Live image display at 12fps (800 x 560)
- Image size: 1600 x 1200 pixels
- PC connection via USB2.0
- Dedicated application software—ACT-2U



Dedicated camera control software ACT-2U



### Camera Control Software for DS-LI/DS-UI

#### Scene mode—optimal imaging with a single mouse click

Optimal imaging parameters have been preset for each sample type, therefore anyone, regardless of experience, can easily perform photography of the highest level.



Wafer/IC Chip



Metal/Ceramics



PCB

#### A host of measuring tools



Two-point distance



Scale



Point to line distance



Intersection angle



Circumference/diameter



Area (DS-UI only)



XY Scale



Screen pattern (crossline, circle)



Cross scale (DS-L1 only)

\*Dedicated ACT-2U camera control software is necessary when using the DS-UI.

### Camera Heads

Select the best type to match your sample and use.

#### For brightfield, darkfield, DIC observations

##### DS-2MBW



- Image size: 1600 x 1200 pixels
- 15 fps (30 max.)
- Superb movie

##### DS-5M



- Image size: 2560 x 1920 pixels
- True-to-life recording of minute images

#### For fluorescence observations (that require long exposure)

##### DS-2MBWc



- Image size: 1600 x 1200 pixels
- Sensitivity approx. 5 times greater than predecessors
- Includes a Peltier device
- Brilliant images with minimum noise

##### DS-5Mc



- Image size: 2560 x 1920 pixels
- Includes a Peltier device
- Brilliant images with minimum noise



## Ultrahigh-definition Digital Camera

# DXM1200F

The DXM1200F produces true-to-life, extremely high-quality images with up to approximately 12 million output pixels. It meets the demanding requirements of professional users and is excellent for image analysis in the advanced R&D fields.

- Approx. 12 million output pixels comparable to high-end film cameras, thanks to Nikon's exclusive micro-step high-density imaging technology
- Live image display at a frame rate of 12 fps max.
- The wide exposure latitude produces true-to-life images regardless of brightness level.

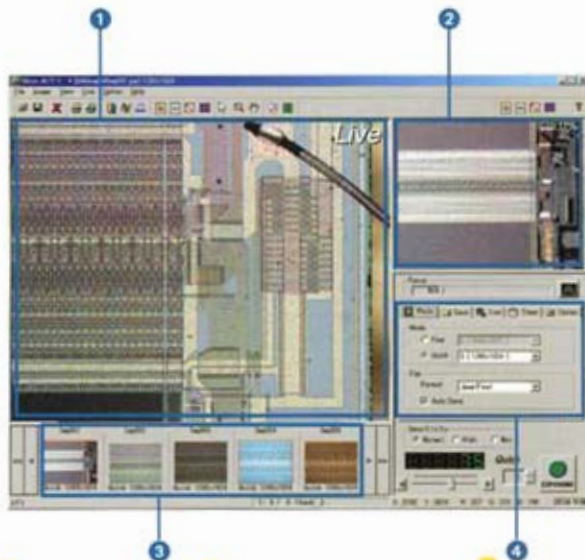


### Camera Control Software

## ACT-1

**Minimizes fatigue during large-volume and extended time shooting.**

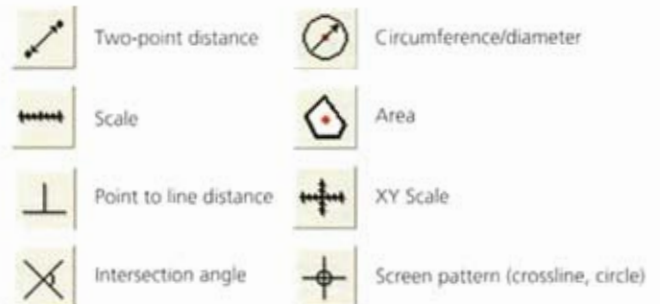
All essential sections, including ① live image preview, ② captured image window, ③ thumbnail, and ④ image capture parameter setting panel, are simultaneously displayed on a single screen, enabling users to easily understand image capture procedures. The size of the parameter setting panel has been reduced to leave more space for image display.



### Option: Camera Control Software

## ACT-2U

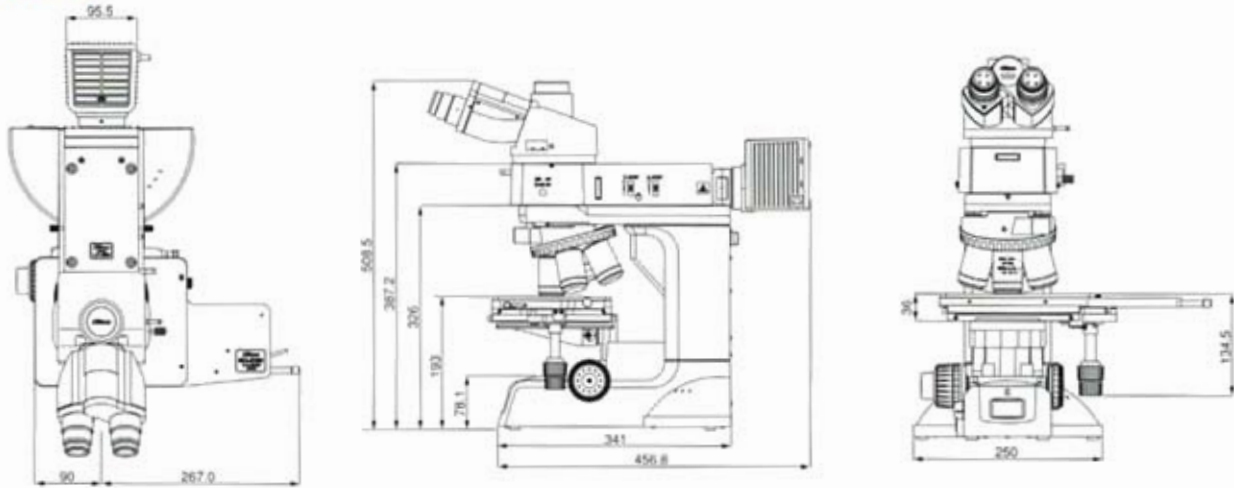
The optional ACT-2U software offers the following arrays of convenient measurement tools.



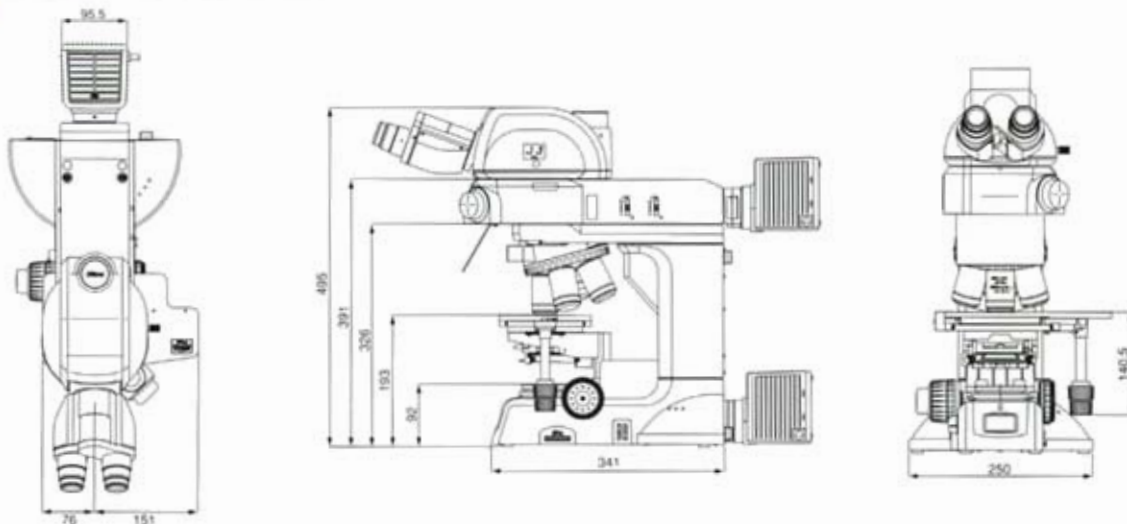
# Digital Camera

# Dimensional diagrams

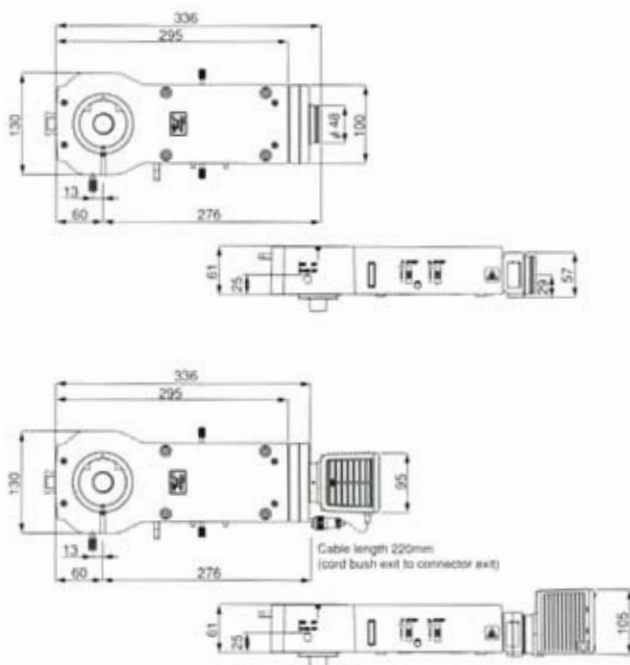
**LV150A/LV150**



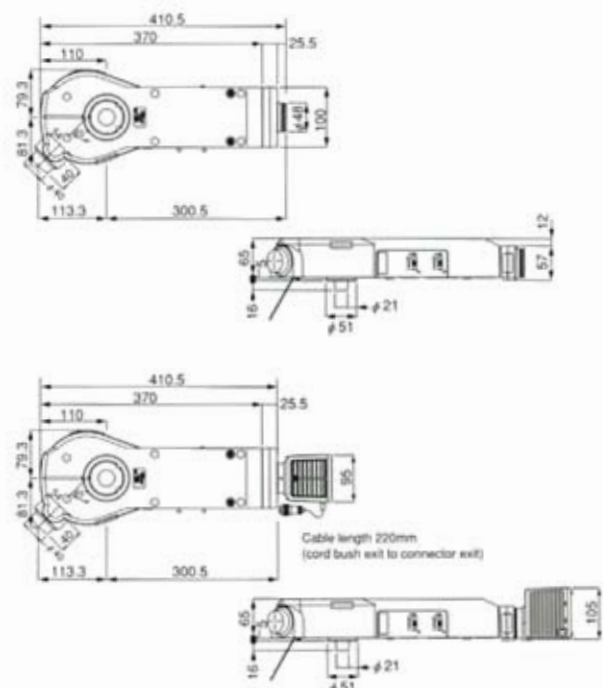
**LV100D**



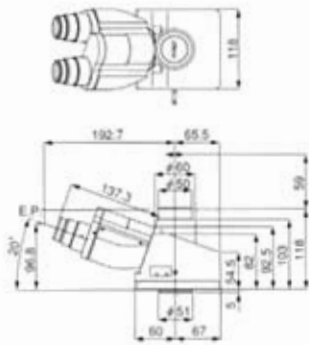
**LV-UEPI Universal Epi-Illuminator**



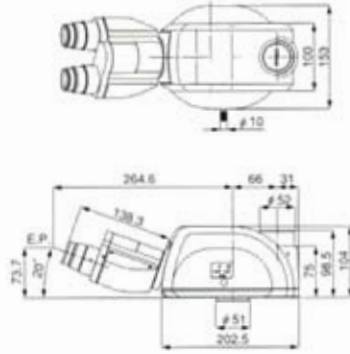
**LV-UEPI2 Universal Epi-Illuminator 2**



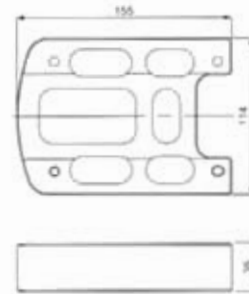
**LV-TI3 Trinocular Tube ESD**



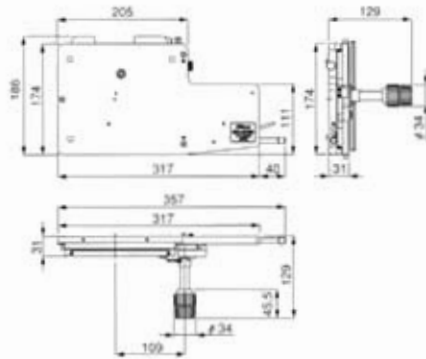
**LV-TT2 Tilting Trinocular Tube**



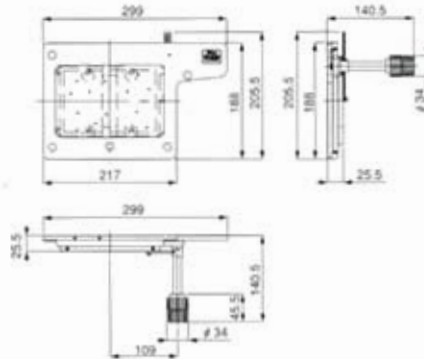
**LV-CR Column Riser 35**



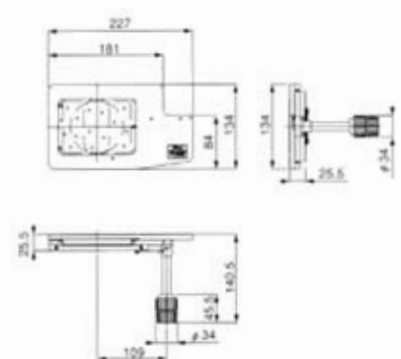
**LV-S6 6x6 Stage**



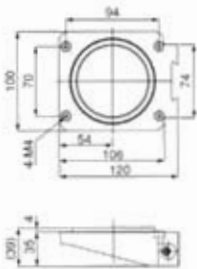
**LV-S64 6x4 Stage**



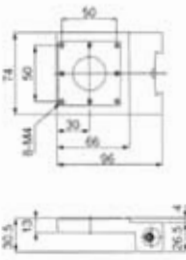
**LV-S32 3x2 Stage**



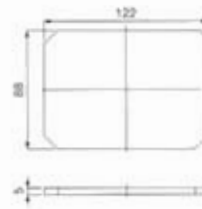
**LV-SUB Stage**



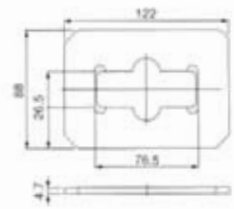
**LV-SUB Stage 2**



**LV-S32PL ESD Plate**



**LV-S32SGH Slide Glass Holder**



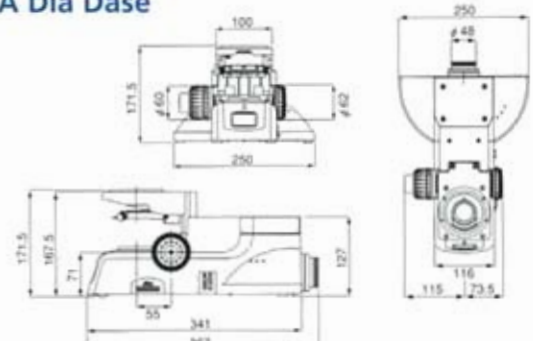
**LV-NU5A Nosepiece**



**LV-NCNT Nosepiece Controller**

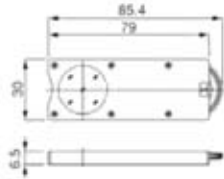


**LV-DIA Dia Dase**

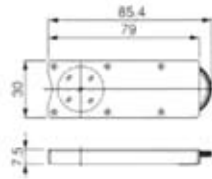


## Polarizers/Analyzers/ $\lambda$ Plate

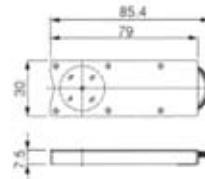
YM-PO Polarizer



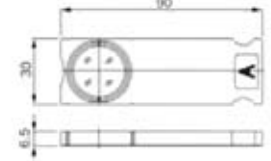
LV-PO Polarizer



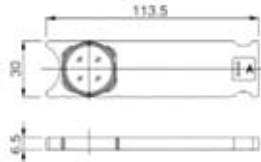
LV-UVPO Polarizer



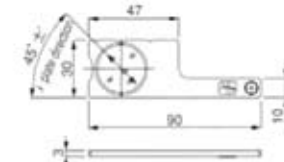
L-AN Analyzer



LV-FLAN FL Analyzer



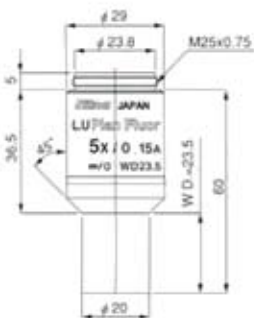
LV- $\lambda$ P  $\lambda$ Plate



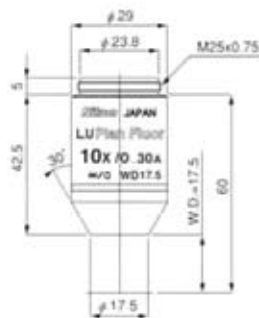
## Objective Lenses

### CFI LU PLAN FLUOR

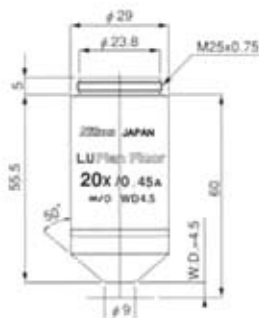
CFI LU Plan Fluor EPI 5X



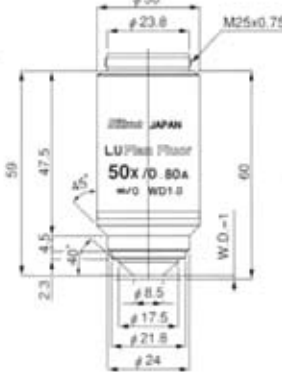
CFI LU Plan Fluor EPI 10X



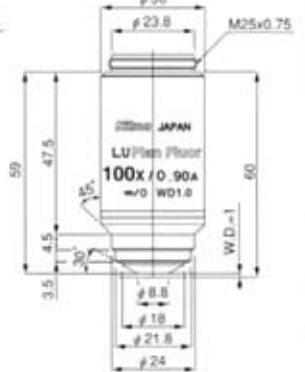
CFI LU Plan Fluor EPI 20X



CFI LU Plan Fluor EPI 50X

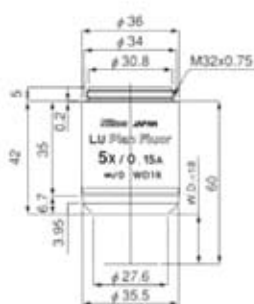


CFI LU Plan Fluor EPI 100X

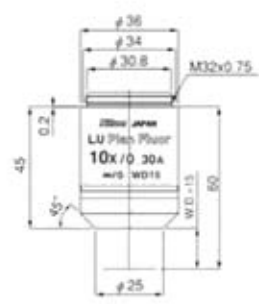


### CFI LU PLAN FLUOR BD

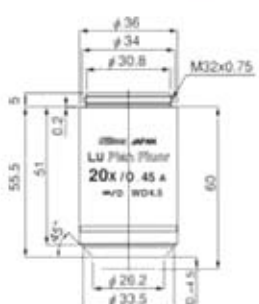
CFI LU Plan Fluor BD 5X



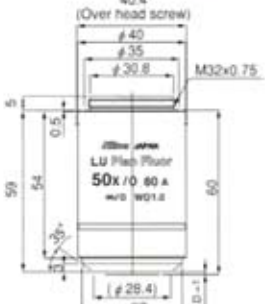
CFI LU Plan Fluor BD 10X



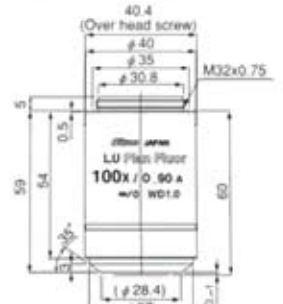
CFI LU Plan Fluor BD 20X



CFI LU Plan Fluor BD 50X

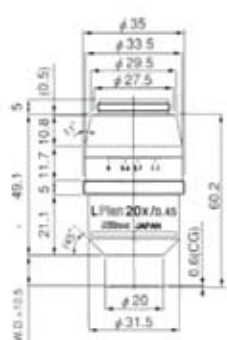


CFI LU Plan Fluor BD 100X

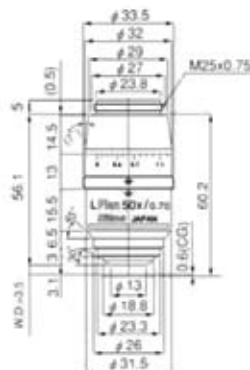


### CFI L PLAN EPI CR

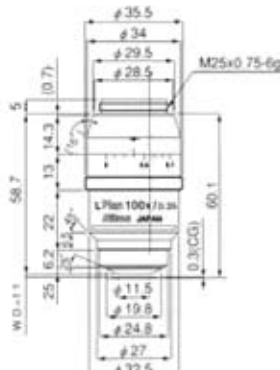
CFI L PLAN EPI 20XCR



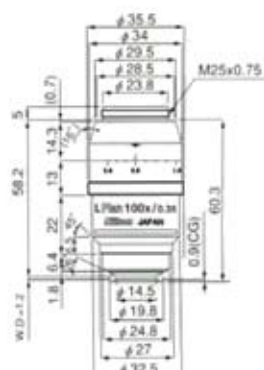
CFI L PLAN EPI 50XCR



CFI L PLAN EPI 100XCRA



CFI L PLAN EPI 100XCRB



# Main specifications

## LV150/150A

Main body	Baseless type (spacer insertable between arm and stand); Max. sample height 47mm (when configured with 3x2 stage/6x4 stage), 82mm with column riser, 116.5mm with Suruga Seiki B23-60CR; 12V-50W brightness control built-in transformer
Focusing mechanism	Coaxial coarse/fine focus knob, left: coarse/fine, right: fine; Stroke 40mm, coarse 14.0mm/rotation (torque adjustable, with refocusing mechanism), fine focusing 0.1mm/rotation (1mm/increments)
Nosepiece	C-N6 Nosepiece (brightfield, sextuple), L-NBD5 Nosepiece (bright/darkfield quintuple, with flare prevention), L-NU5 Nosepiece (universal quintuple, with flare prevention), LV-NU5A Nosepiece (for LV150A, high-durability motorized universal quintuple, with flare prevention)
Episcopic illuminator LV-U EPI	12V-50W high-intensity halogen lamp; Field (centerable) and aperture diaphragms synchronized with B/D changeover; $\phi$ 25mm filter (NCB11, ND16, ND4) insertable; Polarizer/analyzer insertable
Episcopic illuminator LV-U EPI2	12V-50W high-intensity halogen lamp; 120W high-intensity mercury-fiber illuminator (with brightness control, no centering necessary) mountable; Centerable field and aperture diaphragms synchronized with B/D changeover; f25mm filter (NCB11, ND16, ND4) insertable; Polarizer/analyzer/plate insertable, excitation balancer insertable
Eyepiece tube	LV-T13 Trinocular (erect image, F.O.V. 22/25), LV-TT2 Tilting Trinocular (erect image, F.O.V. 22/25), Y-TF Trinocular (inverted image, F.O.V. 22/25), Y-TB Binocular (inverted image, F.O.V. 22), C-TE Tilting Binocular (inverted image, F.O.V. 22)
Stage	LV-S32 3x2 Stage (stroke: 75x50 mm including glass plate), ESD-applied (excluding glass plate) LV-S64 6x4 Stage (stroke: 150x100 mm including glass plate), ESD-applied (excluding glass plate) LV-S6 6x6 Stage (stroke: 150x150 mm; only for episcopic illumination)
Eyepiece	CFI eyepiece series
Objective lens	CFI60 series
Electrostatic decay time	1000-10V, within 0.2 sec.
Power consumption	1.2A/75W
Weight	Approx. 8.6kg

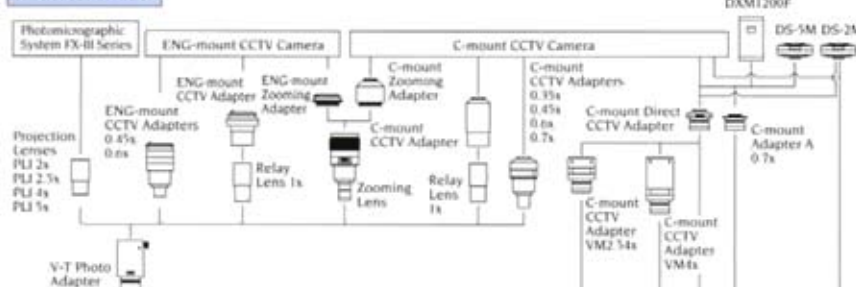
## LV100D

Main body	Baseless type (spacer insertable between arm and stand); Max. sample height 29mm, 64mm with column riser; 12V-50W brightness control built-in transformer
Focusing mechanism	Coaxial coarse/fine focus knob, left: coarse/fine, right: fine; Stroke 30mm, coarse 14.0mm/rotation (torque adjustable, with refocusing mechanism), fine focusing 0.1mm/rotation (1mm/increments)
Nosepiece	C-N6 Nosepiece (brightfield, sextuple), L-NBD5 Nosepiece (bright/darkfield quintuple, with flare prevention), L-NU5 Nosepiece (universal quintuple, with flare prevention)
Episcopic illuminator LV-U EPI	12V-50W high-intensity halogen lamp; Field (centerable) and aperture diaphragms synchronized with B/D changeover; f25mm filter (NCB11, ND16, ND4) insertable; Polarizer/analyzer insertable
Episcopic illuminator LV-U EPI2	12V-50W high-intensity halogen lamp; 120W high-intensity mercury-fiber illuminator (with brightness control, no centering necessary) mountable; Centerable field and aperture diaphragms synchronized with B/D changeover; f25mm filter (NCB11, ND16, ND4) insertable; Polarizer/analyzer/plate insertable, excitation balancer insertable
Diascopic illuminator	12V-50W high-intensity halogen lamp; Field (centerable) and aperture diaphragms synchronized with B/D changeover; Filters (ND8, NCB11) insertable
Eyepiece tube	LV-T13 Trinocular (erect image, F.O.V. 22/25), LV-TT2 Tilting Trinocular (erect image, F.O.V. 22/25), Y-TF Trinocular (inverted image, F.O.V. 22/25), Y-TB Binocular (inverted image, F.O.V. 22), C-TE Tilting Binocular (inverted image, F.O.V. 22)
Stage	LV-S32 3x2 Stage (stroke: 75x50 mm including glass plate) LV-S64 6x4 Stage (stroke: 150x100 mm including glass plate)
Eyepiece	CFI eyepiece series
Objective lens	CFI60 series
Electrostatic decay time	1000-10V, within 0.2 sec.
Power consumption	1.2A/75W
Weight	Approx. 9.4kg

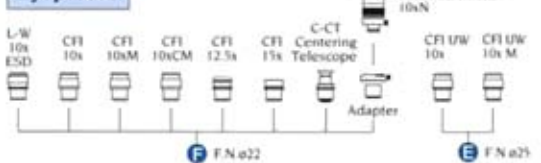
# System diagram

## LV150/LV150A

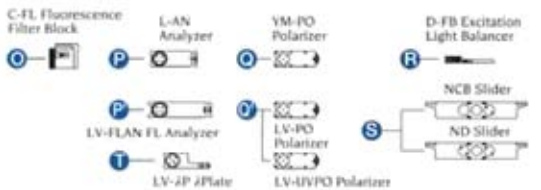
### Camera Mount



### Eyepieces



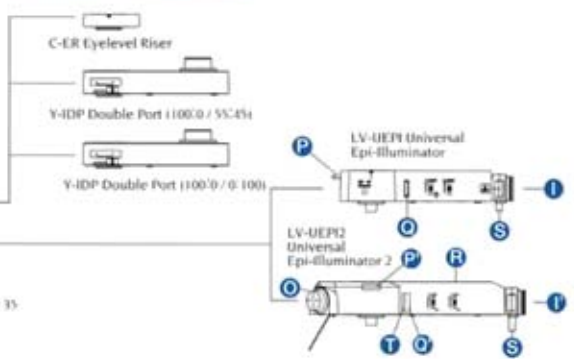
### Filter Blocks and Sliders



### Eyepiece Tubes

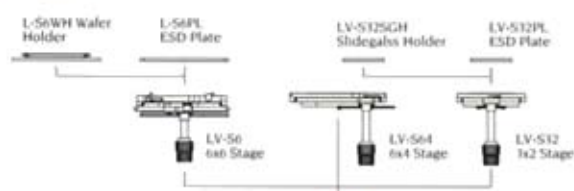


### Intermediate Modules

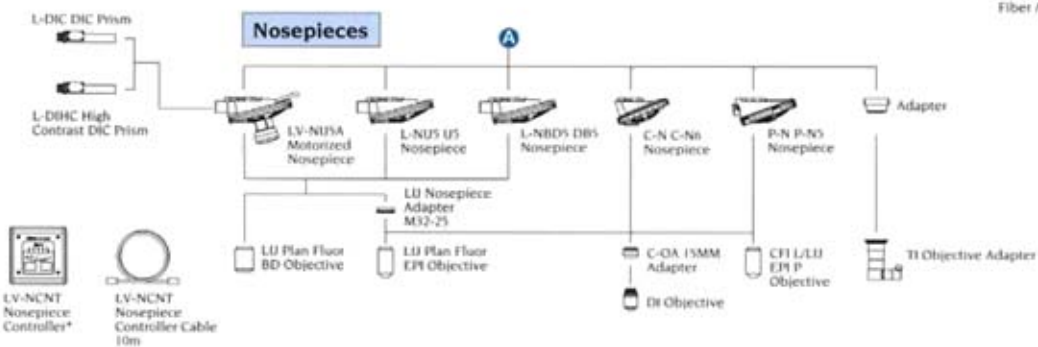


## LV150 LV150A

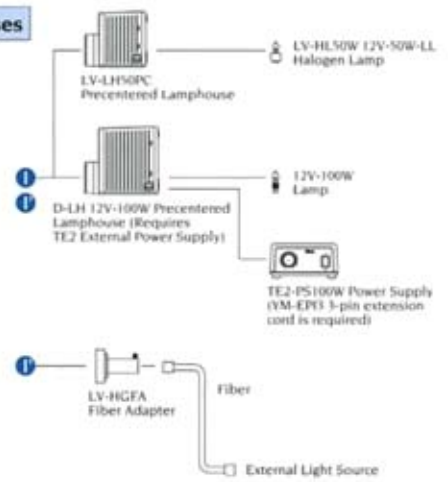
### Stages



### Nosepieces



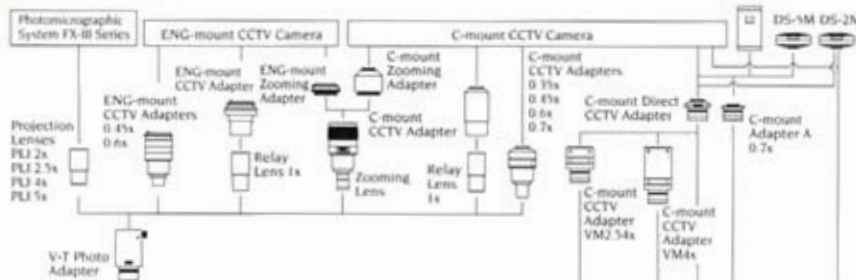
### Lamphouses



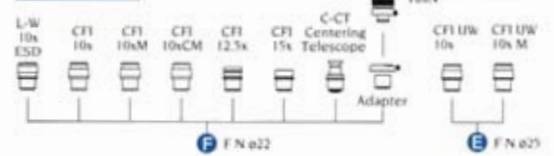
\*Not necessary on the LV150A as the operation unit has been built into the main body.

# LV100D

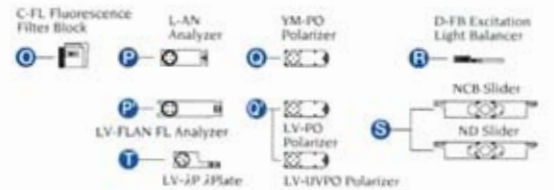
## Camera Mount



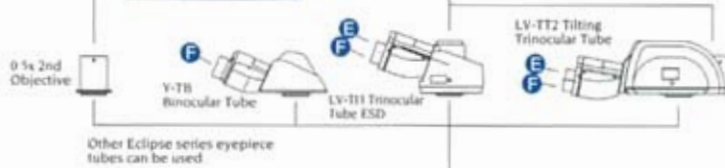
## Eyepieces



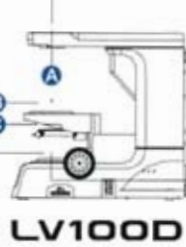
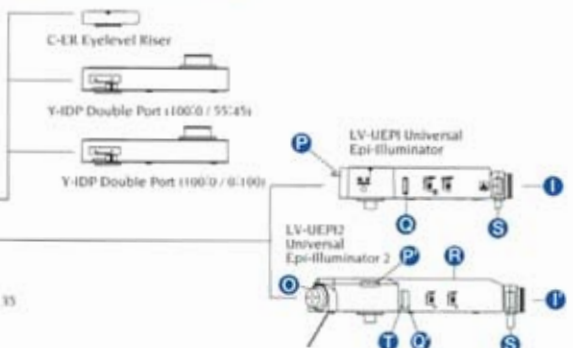
## Filter Blocks and Sliders



## Eyepiece Tubes

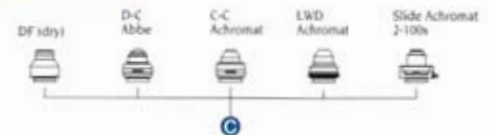


## Intermediate Modules

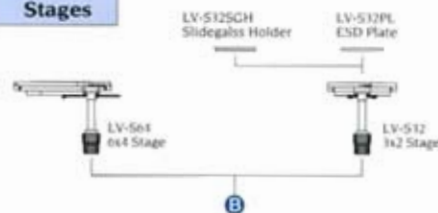


**LV100D**

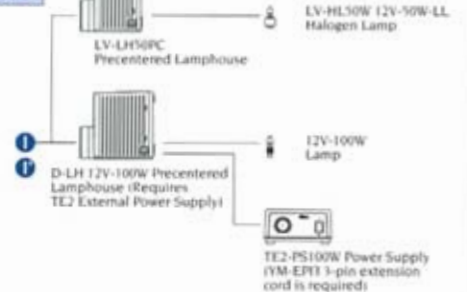
## Condensers



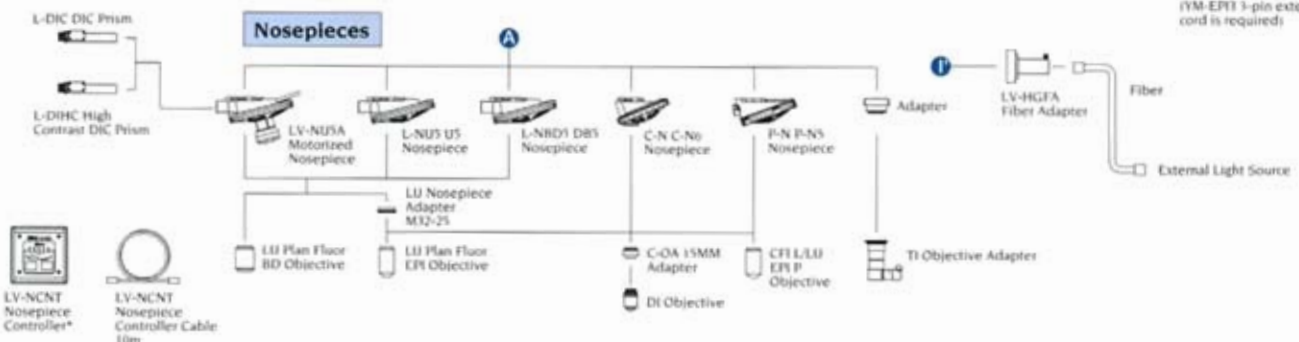
## Stages



## Lamphouses



## Nosepieces



Specifications and equipment are subject to change without any notice or obligation on the part of the manufacturer. May 2005. ©2005 NIKON CORPORATION



**WARNING**

TO ENSURE CORRECT USAGE, READ THE CORRESPONDING MANUALS CAREFULLY BEFORE USING YOUR EQUIPMENT.



**NIKON CORPORATION**  
Fuji Bldg., 2-3, Marunouchi 3-chome, Chiyoda-ku,  
Tokyo 100-8331, Japan  
[www.nikon.com/](http://www.nikon.com/)

**NIKON INSTRTECH CO., LTD.**

Parale Mitsui Bldg., 8, Higashida-cho, Kawasaki-ku,  
Kawasaki, Kanagawa 210-0005, Japan  
phone: +81-44-223-2175 fax: +81-44-223-2182  
<http://www.nikon-instruments.jp/eng/>

**NIKON INSTRUMENTS (SHANGHAI) CO., LTD.**

CHINA phone: +86-21-5836-0050 fax: +86-21-5836-0030  
(Beijing office)  
CHINA phone: +86-10-5869-2255 fax: +86-10-5869-2277

**NIKON SINGAPORE PTE LTD**

SINGAPORE phone: +65-6559-3618 fax: +65-6559-3668

**NIKON MALAYSIA SDN. BHD.**

MALAYSIA phone: +60-3-78763887 fax: +60-3-78763387

**NIKON INSTRUMENTS KOREA CO., LTD.**

KOREA phone: +82-2-2186-8420 fax: +82-2-555-4415

Printed in Japan (0505-15)T

**NIKON INSTRUMENTS EUROPE B.V.**

P.O. Box 222, 1170 AE Badhoevedorp, The Netherlands  
phone: +31-20-44-96-222 fax: +31-20-44-96-298  
<http://www.nikon-instruments.com/>

**NIKON FRANCE S.A.S.**

FRANCE phone: +33-1-45-16-45-16 fax: +33-1-45-16-00-33

**NIKON GMBH**

GERMANY phone: +49-211-9414-0 fax: +49-211-9414-322

**NIKON INSTRUMENTS S.p.A.**

ITALY phone: +39-55-3009601 fax: +39-55-300993

**NIKON AG**

SWITZERLAND phone: +41-43-277-2860 fax: +41-43-277-2861

**NIKON UK LTD.**

UNITED KINGDOM phone: +44-20-8541-4440 fax: +44-20-8541-4584

Code No. 2CE-KVKH-1



ISO 14001 Certified  
NIKON INSTRTECH CO., LTD.



ISO 9001 Certified  
NIKON CORPORATION  
Instruments Company



ISO 14001 Certified  
NIKON CORPORATION  
Yokohama Plant



This brochure is printed on recycled paper made from 40% used material.